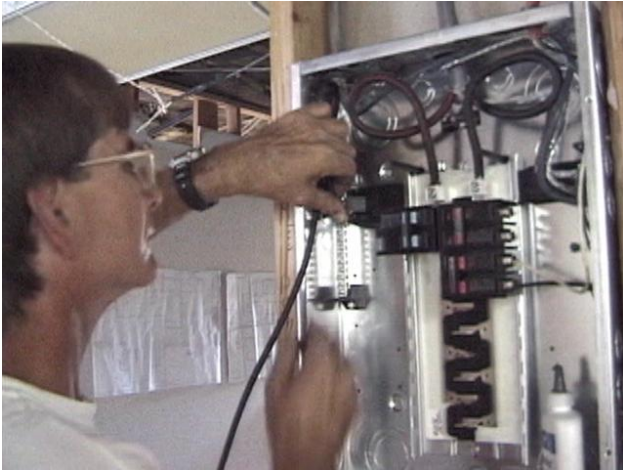


VERMONT

State Construction Projects



Prevailing Wage Information



October 2008

TABLE OF CONTENTS

Prevailing Wage Requirements	2
Prevailing Wage Rates	
Burlington-South Burlington Metropolitan Statistical Area	3
Northern Vermont Area	4
Southern Vermont Area	5
Vermont Statewide	6
Geographic Regions	
Map of State Construction Prevailing Wage Areas	7
Towns in each region	8

PREVAILING WAGE REQUIREMENTS FOR STATE FUNDED CONSTRUCTION PROJECTS

29 V.S.A. Section 161(b)

Which projects are covered ?

Any project authorized or funded by the "Capital Construction Act" which cost more than \$100,000.

Which occupations are covered ?

This prevailing wage requirement is only applicable to the list of occupations and geographical regions that follow. If you cannot find an appropriate occupation for the substate region or at the statewide level, there is no prevailing wage requirement.

What is the wage requirement ?

All construction employees shall be paid no less than the mean (average) prevailing wage published by The Vermont Department of Labor. The mean prevailing wage rates published here are effective as of October 2008. These rates will remain in effect until the next update, anticipated in June 2009.

Do these wages include the cost of Fringe Benefits ?

No. Wages are straight-time, gross pay, exclusive of premium pay and do not include the cost of fringe benefits.

Is a Fringe Benefit package required ?

No. The prevailing wage law does not include a fringe benefit requirement.

Which geographic region should be used ?

1. Use the wage rate for the substate area where the job is located.
2. If the occupation is not listed in the relevant area, use the statewide wage rate.
3. If the occupation is not listed in the relevant area or statewide, there is no prevailing wage requirement.

What are the substate regions ?

Occupational wage rates are available for 3 substate regions.
Burlington-South Burlington Metropolitan Statistical Area
Northern Vermont Area
Southern Vermont Area

To determine the region where a job is located, use the regional map and list of towns on pages 7-8.

What is the source of the wage rates ?

Prevailing wage rates are based on the latest Occupational Employment and Wage Survey information released in June 2008. Additional information is available at www.vtLmi.info, "Wages & Income", or call the Economic & Labor Market Information section at (802) 828-4202.

Where can I get more information or assistance ?

For questions relating to the prevailing wage law including what projects are covered:

Bob Rea, Director of Construction
Vermont Department of Buildings and General Services
phone (802) 828-5651, pager (802) 250-2961
email bob.rea@state.vt.us

For questions relating to the wage rates or geographic regions:

Vermont Department of Labor, Economic & Labor Market Information
phone (802) 828-4202
email Labor-Lmi@state.vt.us

Burlington-South Burlington* Metropolitan Statistical Area

SOC	Occupational Title	Hourly Wage
47-1011	First-line supervisors/managers of construction trades and extraction workers	29.32
47-2031	Carpenters	19.20
47-2041	Carpet installers	17.09
47-4011	Construction and building inspectors	20.02
47-2061	Construction laborers	14.28
47-2081	Drywall and ceiling tile installers	18.70
47-2111	Electricians	20.05
47-2121	Glaziers	16.26
47-4041	Hazardous materials removal workers	18.11
47-3012	Helpers--carpenters	13.94
47-3013	Helpers--electricians	12.30
47-3015	Helpers--pipelayers, plumbers, pipefitters, and steamfitters	14.71
47-4051	Highway maintenance workers	15.91
47-2132	Insulation workers, mechanical	16.87
47-2073	Operating engineers and other construction equipment operators	16.34
47-2141	Painters, construction and maintenance	16.82
47-2152	Plumbers, pipefitters, and steamfitters	20.87
47-2181	Roofers	14.59
47-2211	Sheet metal workers	18.17
47-2022	Stonemasons	23.90
47-2221	Structural iron and steel workers	18.56
47-2082	Tapers	17.09

* Towns in this region are listed on page 8.

Northern Vermont*

Area

SOC	Occupational Title	Hourly Wage
47-1011	First-line supervisors/managers of construction trades and extraction workers	26.85
47-2021	Brickmasons and blockmasons	21.52
47-2031	Carpenters	16.99
47-4011	Construction and building inspectors	21.81
47-2061	Construction laborers	13.68
53-7021	Crane and tower operators	17.16
47-2111	Electricians	17.82
53-7032	Excavating and loading machine and dragline operators	17.25
47-2042	Floor layers, except carpet, wood, and hard tiles	15.07
47-3011	Helpers--brickmasons, blockmasons, stonemasons, and tile and marble setters	15.34
47-3012	Helpers--carpenters	12.92
47-3013	Helpers--electricians	12.46
47-3015	Helpers--pipelayers, plumbers, pipefitters, and steamfitters	11.79
47-4051	Highway maintenance workers	15.54
47-2073	Operating engineers and other construction equipment operators	16.55
47-2141	Painters, construction and maintenance	13.94
47-2071	Paving, surfacing, and tamping equipment operators	13.84
47-2151	Pipelayers	16.07
47-2152	Plumbers, pipefitters, and steamfitters	20.13
47-2181	Roofers	15.55
47-2211	Sheet metal workers	15.69
47-2221	Structural iron and steel workers	15.73

* Northern Vermont Area excludes towns in the Burlington-South Burlington MSA.
See page 8 for a list of towns in this area.

Southern Vermont* Area

SOC	Occupational Title	Hourly Wage
47-1011	First-line supervisors/managers of construction trades and extraction workers	28.28
47-2031	Carpenters	17.61
47-4011	Construction and building inspectors	18.77
47-2061	Construction laborers	13.07
47-5021	Earth drillers, except oil and gas	14.67
47-2111	Electricians	18.55
53-7032	Excavating and loading machine and dragline operators	17.58
47-4031	Fence erectors	13.00
47-2121	Glaziers	16.43
47-3012	Helpers--carpenters	12.61
47-3015	Helpers--pipelayers, plumbers, pipefitters, and steamfitters	12.71
47-4051	Highway maintenance workers	15.07
47-2141	Painters, construction and maintenance	15.31
47-2071	Paving, surfacing, and tamping equipment operators	15.58
47-2181	Roofers	13.67
47-4071	Septic tank servicers and sewer pipe cleaners	17.16
47-2211	Sheet metal workers	14.20
47-2082	Tapers	19.35

* Southern Vermont Area excludes towns in the Burlington-South Burlington MSA.
See page 8 for a list of towns in this area.

Vermont Statewide

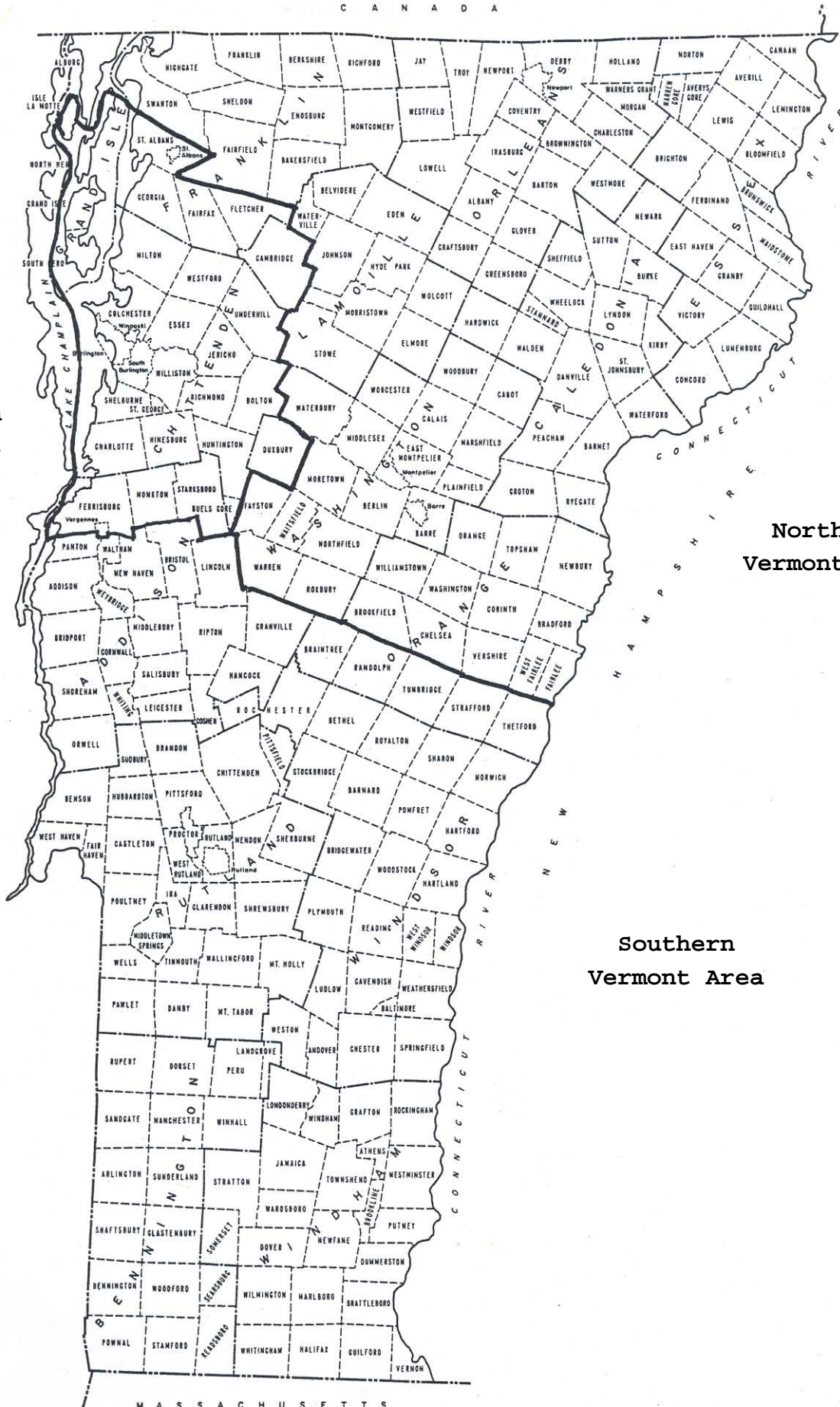
SOC	Occupational Title	Hourly Wage
47-1011	First-line supervisors/managers of construction trades and extraction workers	28.30
47-2021	Brickmasons and blockmasons	20.52
47-2031	Carpenters	17.94
47-2041	Carpet installers	15.98
47-4011	Construction and building inspectors	19.81
47-2061	Construction laborers	13.62
53-7021	Crane and tower operators	16.75
47-2081	Drywall and ceiling tile installers	17.18
47-5021	Earth drillers, except oil and gas	15.80
47-2111	Electricians	18.79
53-7032	Excavating and loading machine and dragline operators	17.14
47-4031	Fence erectors	13.48
47-2042	Floor layers, except carpet, wood, and hard tiles	15.78
47-2121	Glaziers	16.58
47-4041	Hazardous materials removal workers	17.94
47-3011	Helpers--brickmasons, blockmasons, stonemasons, and tile and marble setters	14.22
47-3012	Helpers--carpenters	13.12
47-3013	Helpers--electricians	12.22
47-3015	Helpers--pipelayers, plumbers, pipefitters, and steamfitters	13.36
47-3016	Helpers--roofers	11.20
47-4051	Highway maintenance workers	15.36
47-2131	Insulation workers, floor, ceiling, and wall	13.05
47-2132	Insulation workers, mechanical	16.87
47-5042	Mine cutting and channeling machine operators	19.62
47-2073	Operating engineers and other construction equipment operators	17.36
47-2141	Painters, construction and maintenance	15.23
47-2071	Paving, surfacing, and tamping equipment operators	15.62
47-2151	Pipelayers	18.68
47-2152	Plumbers, pipefitters, and steamfitters	19.49
47-4061	Rail-track laying and maintenance equipment operators	18.88
47-2181	Roofers	14.35
47-4071	Septic tank servicers and sewer pipe cleaners	17.65
47-2211	Sheet metal workers	16.90
47-2022	Stonemasons	20.51
47-2221	Structural iron and steel workers	16.73
47-2082	Tapers	18.31
47-2044	Tile and marble setters	14.60

State Construction Prevailing Wage Areas

C A N A D A

Burlington-South
Burlington
Metropolitan
Statistical
Area

N E W Y O R K



Northern
Vermont Area

Southern
Vermont Area

M A S S A C H U S E T T S

Towns in

Burlington - South Burlington Metropolitan Statistical Area

Bolton	Colchester	Fletcher	Isle La Motte	Richmond	St. Albans	Vergennes
Buels Gore	Duxbury	Georgia	Jericho	Shelburne	St. George	Westford
Burlington	Essex	Grand Isle	Milton	South Burlington	Starksboro	Williston
Cambridge	Fairfax	Hinesburg	Monkton	South Hero	Underhill	Winooski
Charlotte	Ferrisburg	Huntington	North Hero			

Towns in

Northern Vermont Area

Albany	Brownington	East Montpelier	Highgate	Montgomery	Roxbury	Warner's grant
Alburg	Brunswick	Eden	Holland	Montpelier	Ryegate	Warren gore
Averill	Burke	Elmore	Hyde Park	Moretown	Sheffield	Warren
Avery's	Cabot	Enosburg	Irasburg	Morgan	Sheldon	Washington
Bakersfield	Calais	Fairfield	Jay	Morristown	St. Johnsbury	Waterbury
Barnet	Canaan	Fairlee	Johnson	Newark	Stannard	Waterford
Barre	Charleston	Fayston	Kirby	Newbury	Stowe	Waterville
Barton	Chelsea	Ferdinand	Lemington	Newport	Sutton	West Fairlee
Belvidere	Concord	Franklin	Lewis	Northfield	Swanton	Westfield
Berkshire	Corinth	Glover	Lowell	Norton	Topsham	Westmore
Berlin	Coventry	Granby	Lunenburg	Orange	Troy	Wheelock
Bloomfield	Craftsbury	Greensboro	Lyndon	Orleans	Vershire	Williamstown
Bradford	Danville	Groton	Maidstone	Peacham	Victory	Wolcott
Brighton	Derby	Guildhall	Marshfield	Plainfield	Waitsfield	Woodbury
Brookfield	East Haven	Hardwick	Middlesex	Richford	Walden	Worcester

Towns in

Southern Vermont Area

Addison	Castleton	Hancock	Mount Holly	Randolph	Springfield	Wells
Andover	Cavendish	Hartford	Mount Tabor	Reading	Stamford	West Haven
Arlington	Chester	Hartland	New Haven	Readsboro	Stockbridge	West Rutland
Athens	Chittenden	Hubbardton	Newfane	Ripton	Strafford	West Windsor
Baltimore	Clarendon	Ira	Norwich	Rochester	Stratton	Westminster
Barnard	Cornwall	Jamaica	Orwell	Rockingham	Sudbury	Weston
Bellows Falls	Danby	Killington	Panton	Royalton	Sunderland	Weybridge
Bennington	Dorset	Landgrove	Pawlet	Rupert	Thetford	White River Jct.
Benson	Dover	Leicester	Peru	Rutland	Tinmouth	Whiting
Bethel	Dummerston	Lincoln	Pittsfield	Salisbury	Townshend	Whitingham
Braintree	Fair Haven	Londonderry	Pittsford	Sandgate	Tunbridge	Wilmington
Brandon	Glastenbury	Ludlow	Plymouth	Searsburg	Vernon	Windham
Brattleboro	Goshen	Manchester	Pomfret	Shaftsbury	Wallingford	Windsor
Bridgewater	Grafton	Marlboro	Poultney	Sharon	Waltham	Winhall
Bridport	Granville	Mendon	Pownal	Shoreham	Wardsboro	Woodford
Bristol	Guilford	Middlebury	Proctor	Shrewsbury	Weathersfield	Woodstock
Brookline	Halifax	Middletown Springs	Putney	Somerset		

Region definitions based on 2000 U.S. Census, released January 2005.